



Can you find animals from the garden and indoor trail in the word search below?

Bear	Fox	Owl
Dog	Goat	Penguin
Dragon	Goldfish	Tiger
Eagle	Lion	Whale

R N O P T I G E R T R I S Q Y V V X
H Q C J E A A A L M B B J Q E Y F N
W K G W Q F S X Z B E A R Q H F X T
G T L H I R D Z S H D R A G O N U D
G K Q A P L U G W Z Z P C N Z V P G
G G O L D F I S H B Z E F K S D T Z
I L I E W B O N Q N C N X G S B K F
T I V X K T A C C F Z G O O K G Q O
X O O F Q B P S O R J U D A J T M X
L N P W Q T X L L T N I O T U D V G
E E G S L C M F H P T N G U N T F S
K E A G L E O D N W T X S K W W D X

**Well done,
you've finished.**

Remember to collect
your stamp from
Reception.

Garden Animal Trail



Hello, my name is **Scramble**.

What is your name?

There are lots of animal statues and carvings
in our garden. Let me take you on a tour of
the garden - see if you can spot them all.





You can get to the gardens from the Café on the Lower Ground Floor.
Your first stop will be at number 1, on the Balcony.

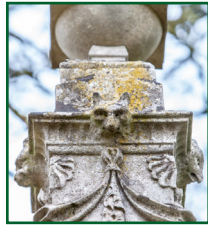
Follow my paw prints to help you find the animals.

Garden Animal Trail

2 Can you spot the Fox? ☐

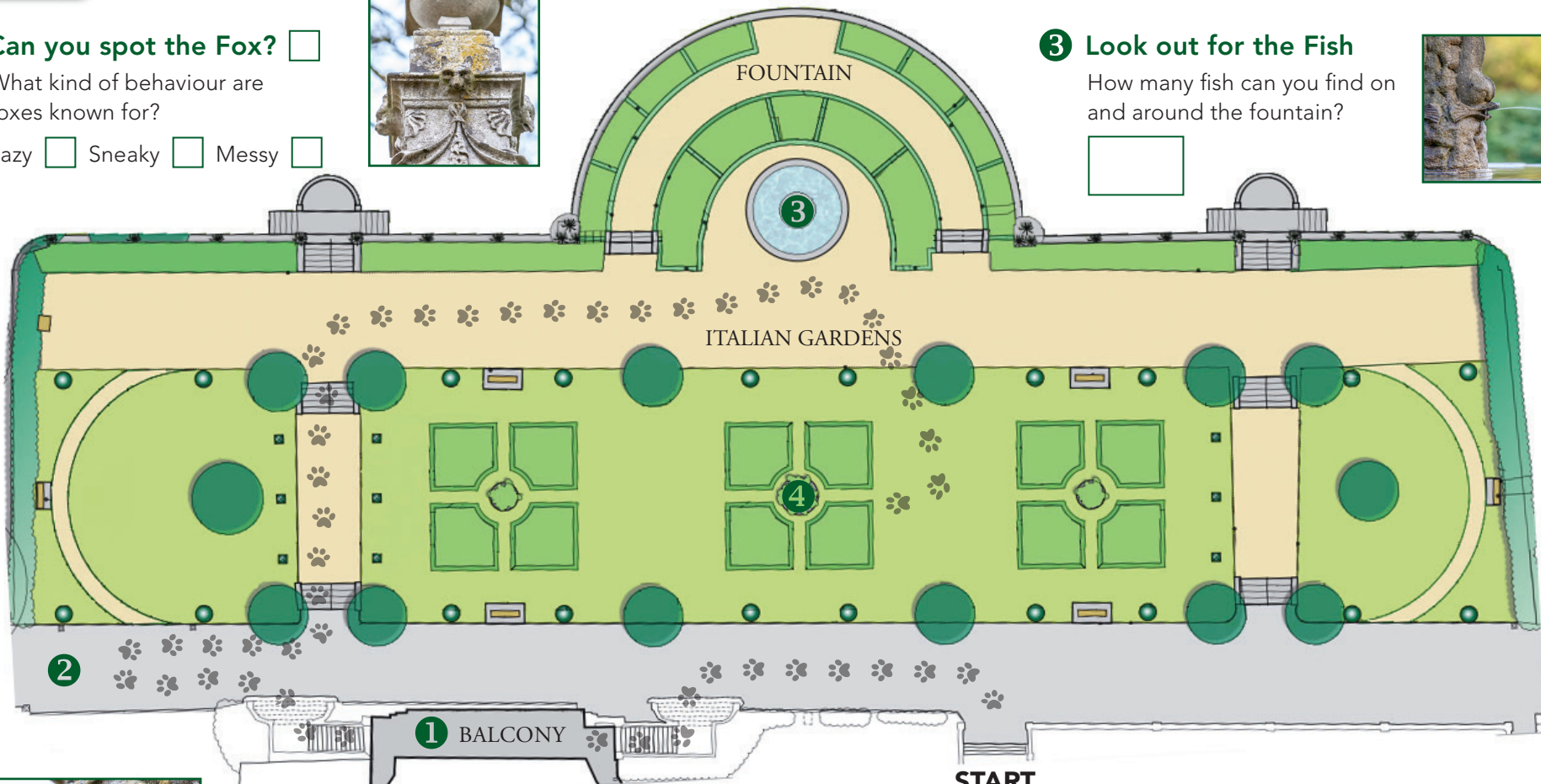
What kind of behaviour are
foxes known for?

Lazy ☐ Sneaky ☐ Messy ☐



3 Look out for the Fish

How many fish can you find on
and around the fountain?



1 Where is the Goat hiding?

On a plant pot ☐ or column? ☐

Did you know? Goats can climb trees. There is
one type of goat that can jump over 5 feet high.

START
HERE



Café

4 How many Winged Lions can you find?

Did you know? A lion's roar is the
loudest of any big cat and can be
heard up to 5 miles away.

