



BENTLEY PRIORY MUSEUM

www.bentleypriorymuseum.org.uk

Primary Schools Programme – 2020/21

PRACTICAL INFORMATION

SITE VISITS

We are pleased to be able to offer **SOLE USE OF THE MUSEUM FOR INDIVIDUAL SCHOOL VISITS.**

You can make a school booking on any of our 'closed days' which are currently: Monday, Tuesday, Thursday or Friday.

We have adapted our school Site Visits to ensure we are adhering to government and sector guidance and this will remain under constant review as the situation evolves:

- We can only accommodate one class of 30 a day in order to maintain social distancing between Staff/Volunteers and members of the visiting group during the Workshop and Museum Tour.
- We have updated our School Risk Assessment to include a Covid-19 Specific section.
- As outlined in the risk assessment, elements of the workshop have been adapted to be Covid-19 secure. For example the children will not be able to wear the RAF/WAAF uniforms and the replica objects will be taken out of use.



The Museum has been awarded a 'We're Good To Go' official UK kite mark, which means we have demonstrated that we are following Government and industry Covid-19 guidelines and have a process in place to maintain cleanliness and aid social distancing:

<https://bentleypriorymuseum.org.uk/museum-re-opening-welcome-back/>

OUTREACH SCHOOL VISITS

We can also deliver outreach visits to schools within a 5 mile radius. Our outreach sessions are accompanied by pre and post visit lesson plans and a STEM activity which can be carried out by the teacher on the day of the visit following the Learning Officer led workshop.



BENTLEY PRIORY MUSEUM

www.bentleypriorymuseum.org.uk

Primary Schools Programme – Covid-19

SITE VISITS

PLOT THE BATTLE OF BRITAIN (Upper KS2)



Children learn about the unique work that was going on at RAF Bentley Priory during the Battle of Britain by 'plotting' incoming aircraft on a recreated map table, taking on different roles and responsibilities and replicating the work in the Filter Room during the Battle.

Subjects: History, Geography, Maths

Duration: Day visit (10 am – 2 pm) - Workshop and Museum Tour

Cost: £4 per pupil

OUTREACH VISITS

PLOTTERS (Upper KS2)



Children will explore the various roles of the WAAF (Women's Auxiliary Air force) and how they worked alongside the RAF during the Battle of Britain. Through video clips and demonstrations of plotting incoming enemy raids on a recreated Filter Room map, children will learn about the important work of RAF Bentley Priory during the Battle and the contribution of the WAAF.

Subjects: History, Science, English

Pre-visit Activity: WAAFS - Who were the WAAFs and what did they do? WAAF Recruitment Poster Activity.

Duration: 1 hour* (*half day option including Learning Officer led STEM Activity)

Learning Officer led Classroom Workshop

Post Workshop STEM Activity (teacher led):

- 'Build a Radar Tower'
- Activity Plan provided



Cost: £3 per child

Post-visit Lesson: WAAF Diary Writing



BENTLEY PRIORY MUSEUM

www.bentleypriorymuseum.org.uk

Primary Schools Programme – Covid-19

OUTREACH VISITS

PILOTS (KS2)



Our WAAF pilot will unpack an RAF kit bag to explore the role of aircrew during the Battle of Britain and the technology they utilised. She will investigate mystery original and replica items with the children as they work together to identify them and discover what they were used for.

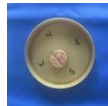
Subjects: History, Science, English

Pre-visit Activity: Pilot ID and RAF Slang Activity

Learning Officer led Classroom Workshop

Post Workshop STEM Activity (teacher led):

- 'Make a compass'
- Activity Plan provided



Duration: 1 hour* (*half day option including Learning Officer led STEM Activity)

Cost: £3 per child

Post-visit Lesson: Pilot Letter Writing activity

BOOKING INFORMATION

In a Grade II* listed mansion house, Bentley Priory Museum offers a unique and inspiring learning environment for young people.

Our bespoke school sessions will enhance your students learning about World War II and the Battle of Britain and support them in developing important historical enquiry skills.

Find out more about our current school offer and how to book:

Contact our Museum Learning Officer, Francesca Piacentini.

learningofficer@bentleypriorymuseum.org.uk

020 3837 6825